

**riscure**

# Calibration service

datasheet  
v1

# Contents

Page 3

The service

- Context
- The challenges it solves
- Unique features

Page 7

Technical details

- Technical specifications
- The package

# The service





# The challenge it solves

Challenges that are solved with the calibration service

## 1. Extended device warranty

By default Riscure devices have 1 year warranty. The calibration service extends this warranty to 5 years. And you choose for which device types you would like to have this warranty. Just for icWaves or Spider: the calibration service is flexible and will fit your needs

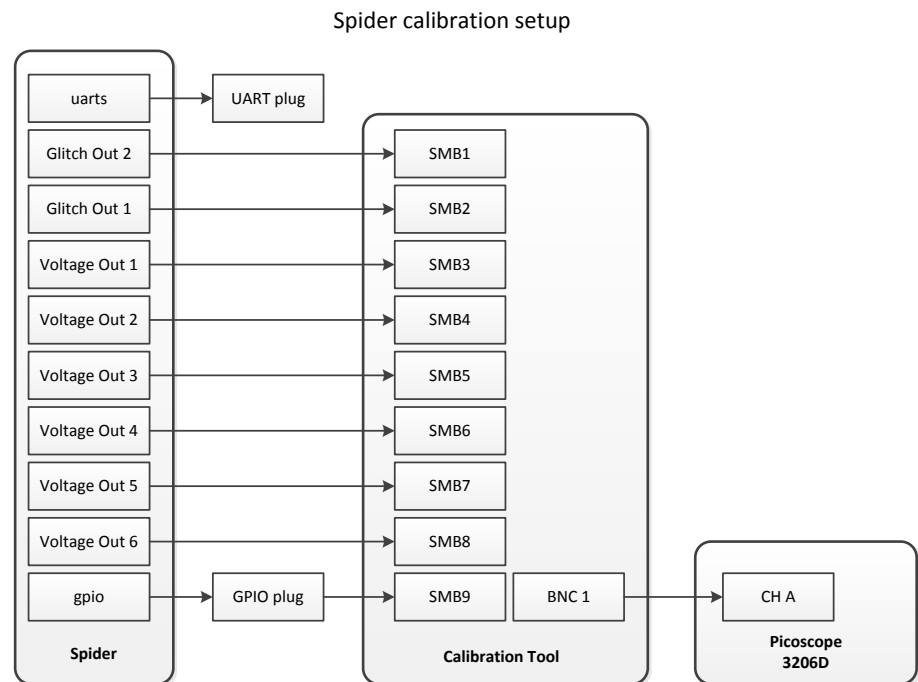
## 2. Make sure your test results are reliable, accurate and reproducible

Make sure results from a SCA or FI setup are reliable and accurate. Easily build a calibration setup and test Riscure devices in minutes. Testing a device can be done without any specific knowledge. The calibration tool will guide through the process and gives clear verdicts

## 3. ISO compliancy

To be compliant with ISO requirements the calibration module produces a report with detailed information on all the tests that have been executed and their verdicts. These reports feature the device serial number any external device reference and a date-time stamp so that they can be used for traceability and audits

Diagrams in the manual help to quickly build a calibration setup and test a Riscure device

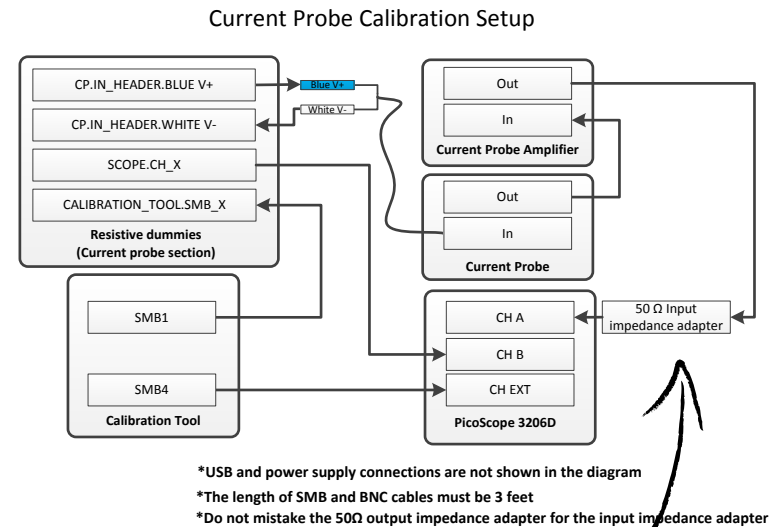


\*USB and power supply connections are not shown in the diagram  
\*The length of SMB and BNC cables must be 3 feet

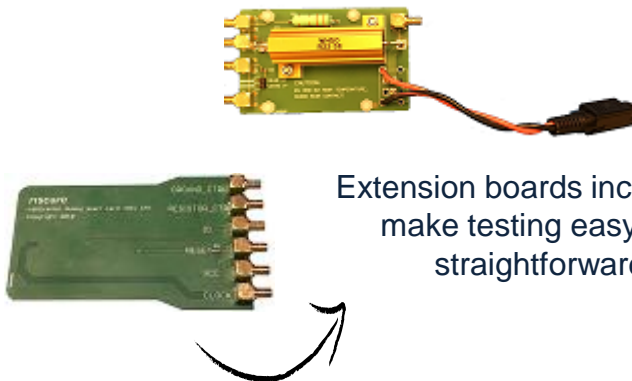
# Unique features

Support for:

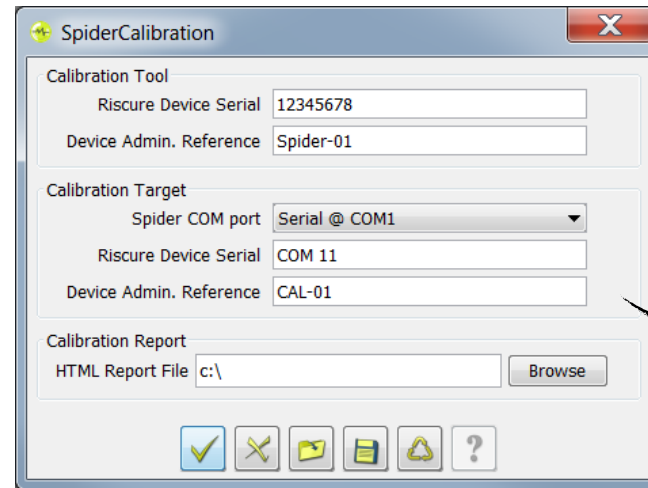
- ✓ Spider
- ✓ Power Tracer 4
- ✓ icWaves 3
- ✓ Glitch Amplifier
- ✓ High Power Glitch Amplifier
- ✓ EM-FI transient probe
- ✓ Current probe



Easy to understand diagrams for all supported devices making sure that everyone can execute tests



Extension boards included to make testing easy and straightforward



Fully integrated in Inspector

# Technical details



# Technical specifications

## Operational conditions

- Room temperature 20 – 30 °C, (68 – 86 °F).



Do not block the ventilation holes. A blocked air flow may cause malfunction or break down.



Maintain stable environmental conditions (temperature, humidity, airflow etc.) in order to reliably repeat tests and compare test results.



Unplugging the PSU from the product is not required, but recommended when not used for an extended time.

## Power supply input

- 15 V DC, current rating 2.4 A
- Center-positive plug, inner-Ø 2.5 mm, outer-Ø 5.5 mm.



Use of a PSU other than supplied by Riscure is not supported. Power spikes may cause internal damage and loss of accuracy.

## Calibration Tool SMB/BNC port maximum ratings




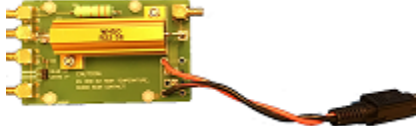


- Voltage input +/-5 V
- Continuous current through any port +/- 150 mA
- Voltage output 0 to +5 V



# Package

1	Calibration Tool		CT
1	15V DC Power Supply Unit, input 100 - 240 V, AC 50 - 60 Hz		PSU
-	Power cable (included with PSU)	 <p data-bbox="1199 879 1392 908">Country specific</p>	
1	Communication cable: USB-A - USB-B, 2 m	 <p data-bbox="1213 1096 1263 1110">USB-B</p> <p data-bbox="1360 1096 1410 1110">USB-A</p>	USB
1	Dummy smart card		DSC

# Package

6	Dummy smart card cable: - SMB - SMB, 50 $\Omega$ , coaxial, 3 ft		SMB2SMB
1	Spider calibration gpio plug		SIOP
1	Spider calibration uart plug		SURTP
1	Resistive dummies board		RDMY
1	SMB-SMB 50 output impedance adpter		50OHMOA
1	SMB Tee adapter		SMBTA

Please contact Riscure for more information.

You can reach us by email : [inforequest@riscure.com](mailto:inforequest@riscure.com),

by phone : +31 15 251 4090 US: +1 650 646 9979

Or on the web: [riscure.com](http://riscure.com).

**riscure**

